



RECP #: 752663

RECORDED 5/8/2019 AT 1:11 PM BK# 2620 PG# 1705  
Debra K. Lee, CLERK OF LARAMIE COUNTY, WY PAGE 1 OF 1

# STATE OF WYOMING CORNER RECORD

(In compliance with the CORNER PERPETUATION AND FILING ACT, Wyoming Statutes, 1997 Section 33-29-140, et. seq., and the Rules and Regulations of the Board of Registrations for Professional Engineers and Professional Land Surveyors)

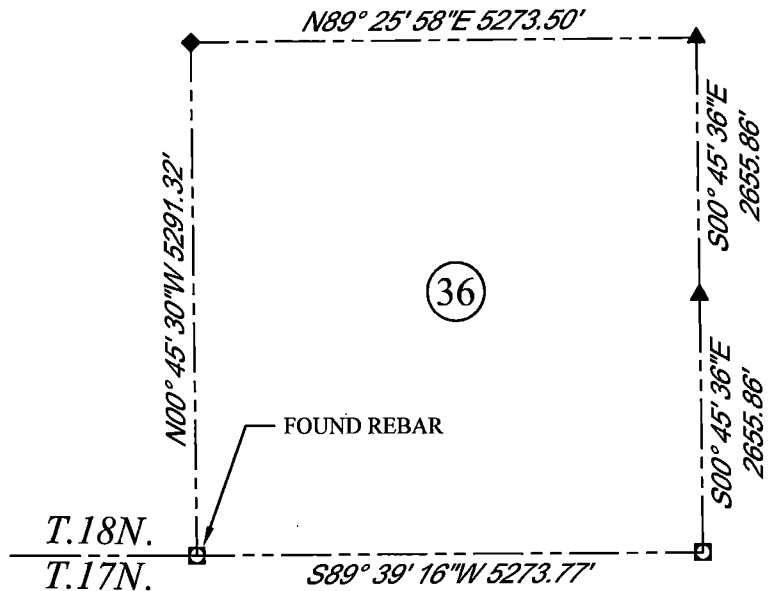
## NORTHWEST CORNER SECTION 1, T. 17 N., R. 63 W., 6TH P.M., LARAMIE COUNTY, WYOMING

**GLO:** SET A SANDSTONE 18X10X5 12 IN. DEEP WITH 5 MARKS ON THE WEST AND ONE ON THE EAST FOR CORNER TO SECTIONS 1, 2, 35 AND 36

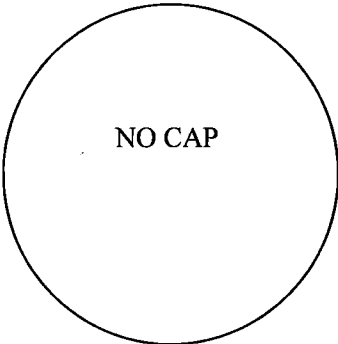
**FOUND:** REBAR, NO CAP, 0.4' ABOVE SURFACE, ON THE N.E. SIDE OF N., E., W. FENCE CORNER.



SCALE: NONE  
NORTH DETERMINED BY  
G.P.S OBSERVATIONS



FOUND: REBAR, NO CAP



DATE OF FIELD WORK: 8/22/2018 OFFICE REFERENCE: MERIDEN

### LEGEND:

- FOUND BLM CAP
- FOUND USFS CAP
- FOUND STONE
- FOUND PRIVATE MONUMENT
- ◆ CALCULATED POSITION
- ▲ SET MONUMENT (LS10245)
- SECTION LINE

### CROSS INDEX DIAGRAM

	1	2	3	4	5	6	7	8	9	10	11	12	13	14	15	16	17	18	19	20	21	22	23	24	25	
A																										
B																										
C		6				5				4					3					2					1	
D																										
E																										
F																										
G		7				8				9					10					11					12	
H																										
J																										
K																										
L		18				17				16					15					14					13	
M																										
N																										
O																										
P		19				20				21					22					23					24	
Q																										
R																										
S																										
T		30				29				28					27					26					25	
U																										
V																										
W																										
X		31				32				33					34					35					36	
Y																										
Z																										

WOOD  
2615 AVIATION DRIVE  
SHERIDAN, WY 82801  
PH: 307-675-6400

THIS CORNER RECORD WAS  
PREPARED BY ME OR UNDER  
MY DIRECTION AND  
SUPERVISION,  
SEAL AND SIGNATURE

# wood.

